



**CLARK**®

**BURDEN CARRIERS**

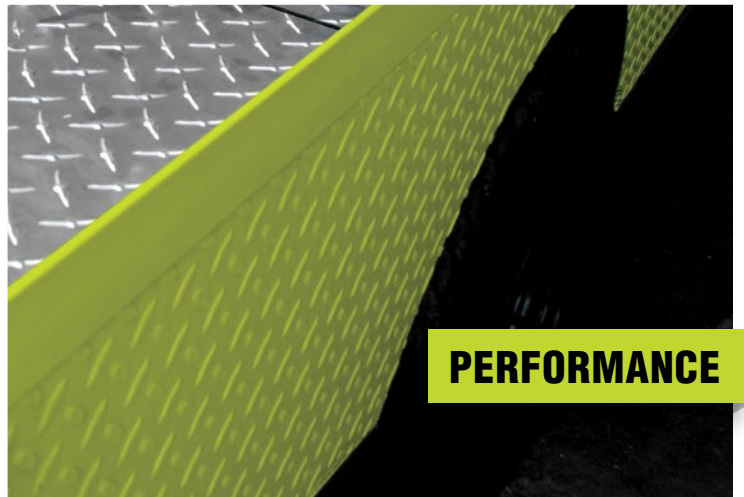
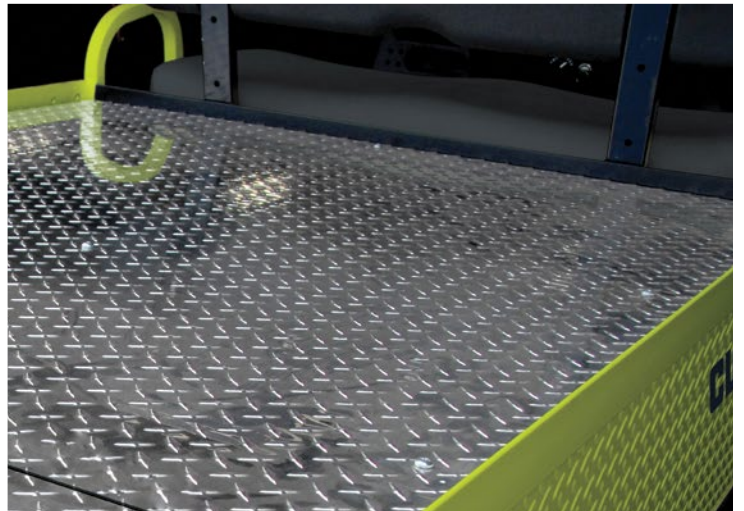
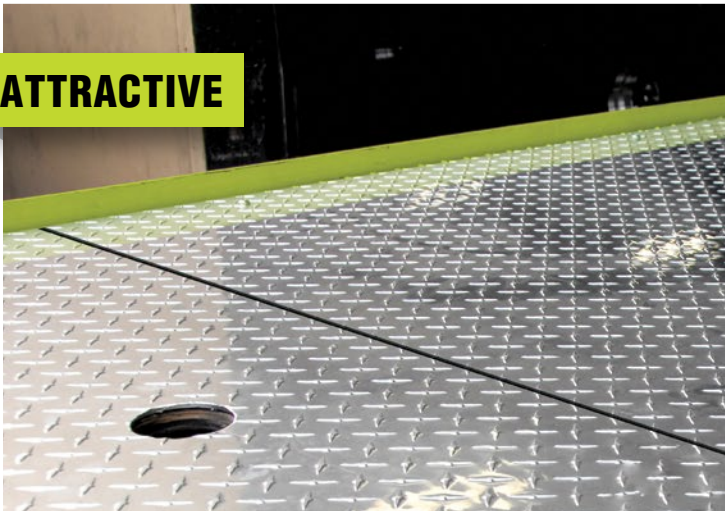


**ECONOMICAL**



**RELIABLE**

**ATTRACTIVE**



**PERFORMANCE**

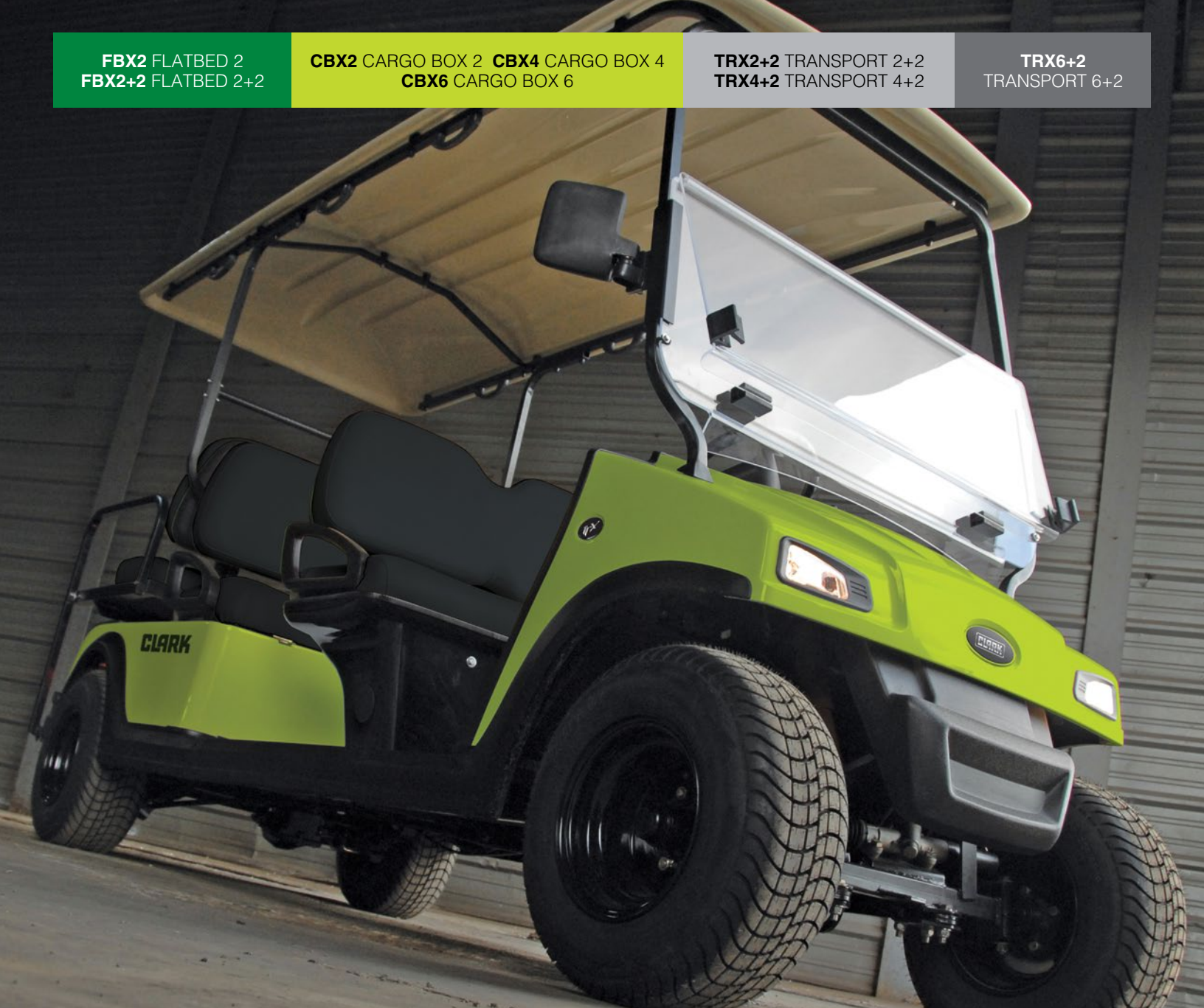


**FBX2** FLATBED 2  
**FBX2+2** FLATBED 2+2

**CBX2** CARGO BOX 2 **CBX4** CARGO BOX 4  
**CBX6** CARGO BOX 6

**TRX2+2** TRANSPORT 2+2  
**TRX4+2** TRANSPORT 4+2

**TRX6+2**  
TRANSPORT 6+2



**CLARK Burden Carriers** are 100% Electric powered for use in a wide range of applications. Designed for moving stock in a warehouse or parts at the factory, guests at the resort or staff at an event. Each vehicle is equipped with AC motors for efficient and dependable power, rear disc brakes give excellent stopping performance and our unique body styles are visually pleasing.





\*STANDARD FRONT UTILITY BASKET NOT SHOWN



**FBX2**



**FBX2+2**



**FBX2 FLATBED 2**  
**FBX2+2 FLATBED 2+2**

FBX vehicles are ideal for distribution centers and factory settings. Two and four passenger models are available. Tail lights and turn signals are standard. Optional side rails secure cargo in place.



**CBX6**

**CBX2 CARGO BOX 2**  
**CBX4 CARGO BOX 4**  
**CBX6 CARGO BOX 6**

The CBX is a compact workhorse perfect for hauling lighter loads and up to six passengers in comfort. Optional canopy tops provide added protection from the elements.

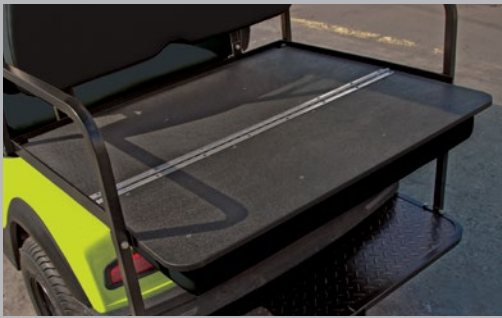


**CBX2**



**CBX4**





**TRX2+2** TRANSPORT 2+2  
**TRX4+2** TRANSPORT 4+2

The TRX series is the perfect choice for warehousing, distribution centers, resorts, and tourist areas when transportation is an important part of the experience.



**TRX2+2**



**TRX4+2**



**TRX6+2**



**TRX6+2**



**TRX6+2** TRANSPORT 6+2

The TRX series carries up to 8 people. A great multi-tasking machine with plenty of battery capacity for extended range. TRX6+2 shown with optional canopy top and windshield.

\*REAR VIEW MIRRORS & UPGRADED WHEELS OPTIONAL



		FBX2	FBX2+2	CBX2	CBX4	CBX6	TRX2+2	TRX4+2	TRX6+2
Manufacturer		CLARK	CLARK	CLARK	CLARK	CLARK	CLARK	CLARK	CLARK
Model		Flatbed 2	Flatbed 2+2	Cargo Box 2	Cargo Box 4	Cargo Box 6	Transport 2+2	Transport 4+2	Transport 6+2
Drive System		Electric	Electric	Electric	Electric	Electric	Electric	Electric	Electric
Motor		AC	AC	AC	AC	AC	AC	AC	AC
HP		6.0HP	6.0HP	6.0HP	6.0HP	6.0HP	6.0HP	6.0HP	6.0HP
Voltage		48V	48V	48V	48V	48V	48V	48V	48V
Controller		450Amp	450Amp	450Amp	450Amp	450Amp	450Amp	450Amp	450Amp
Batteries (optional)		6x8V (8x6V)	6x8V (8x6V)	6x8V (8x6V)	6x8V (8x6V)	6x8V (8x6V)	6x8V (8x6V)	6x8V (8x6V)	6x8V (8x6V)
Charger		12A Hi Freq	12A Hi Freq	12A Hi Freq	12A Hi Freq	12A Hi Freq	12A Hi Freq	12A Hi Freq	12A Hi Freq
Range	mi	10-30	10-30	10-30	10-30	10-30	10-30	10-30	10-30
Speed	mph	10	10	12	12	12	12	12	12
Steering		Rack and Pinion	Rack and Pinion	Rack and Pinion	Rack and Pinion	Rack and Pinion	Rack and Pinion	Rack and Pinion	Rack and Pinion
Suspension	Rear	Leaf Springs/Gas Shocks	Leaf Springs/Gas Shocks	Leaf Springs/Gas Shocks	Leaf Springs/Gas Shocks	Leaf Springs/Gas Shocks	Leaf Springs/Gas Shocks	Leaf Springs/Gas Shocks	Leaf Springs/Gas Shocks
	Front	Leaf Springs/Gas Shocks	Leaf Springs/Gas Shocks	Leaf Springs/Gas Shocks	Leaf Springs/Gas Shocks	Leaf Springs/Gas Shocks	Leaf Springs/Gas Shocks	Leaf Springs/Gas Shocks	Leaf Springs/Gas Shocks
Brakes		Ausco Rear Disc	Ausco Rear Disc	Ausco Rear Disc	Ausco Rear Disc	Ausco Rear Disc	Ausco Rear Disc	Ausco Rear Disc	Ausco Rear Disc
Car Length	in	143.0"	156.0"	98.0"	126.0"	152.0"	105.0"	128.5"	163.0"
Car Width	in	48.25"	48.25"	48.25"	48.25"	48.25"	48.25"	48.25"	48.25"
Car Height	in	77.5" w/Canopy	77.5" w/Canopy	79" w/Canopy	79" w/Canopy	79" w/Canopy	79" w/Canopy	79.5" w/Canopy	73.5" w/Canopy
GVW	lb	2830	2990	2170	2720	3275	2170	2720	3275
Vehicle Capacity		1400 lb.	1400 lb.	800 lb.	1200 lb.	1600 lb.	800 lb.	1200 lb.	1600 lb.
Windshield		Optional	Optional	Optional	Optional	Optional	Optional	Optional	Optional
Canopy		Optional	Optional	Optional	Optional	Optional	Optional	Optional	Optional
Wheels		10" Steel	10" Steel	10" Steel	10" Steel	10" Steel	10" Steel	10" Steel	10" Steel
Tires		205/65-10	205/65-10	205/65-10	205/65-10	205/65-10	205/65-10	205/65-10	205/65-10
Lights		Head & Tail Lights	Head & Tail Lights	Head & Tail Lights	Head & Tail Lights	Head & Tail Lights	Head & Tail Lights	Head & Tail Lights	Head & Tail Lights
		Turn Signal, Horn	Turn Signal, Horn	Turn Signal, Horn	Turn Signal, Horn	Turn Signal, Horn	Turn Signal, Horn	Turn Signal, Horn	Turn Signal, Horn
DC-DC Converter		48 Volt - 12 Volt	48 Volt - 12 Volt	48 Volt - 12 Volt	48 Volt - 12 Volt	48 Volt - 12 Volt	48 Volt - 12 Volt	48 Volt - 12 Volt	48 Volt - 12 Volt
Warranty		One Year	One Year	One Year	One Year	One Year	One Year	One Year	One Year



## Notes

Performance may vary +5% and -10% due to motor and systems efficiency tolerance. The performance shown represents nominal values which may be obtained under typical operating conditions of a standard machine.

## \*ANSI/ITSDF and Insurance Classification

Standard burden carrier meets all applicable mandatory requirements of Part III-ANSI/ITSDF B56.8 Safety Standard for Operator Controlled Personnel and Burden Carriers (latest edition at time of manufacture) and Underwriters Laboratories requirements as to fire and electrical shock hazard only for "E" classification. For further information contact a Clark representative.

Users should be aware of, and adhere to, applicable codes and regulations regarding operator training, use, operation and maintenance of personnel and burden carriers, including:

- ANSI/ITSDF B56.8
- NFPA 505, fire safety standard for powered industrial trucks - type designations, areas of use, maintenance and operation.
- Occupational Safety and Health Administration (OSHA) regulations that may apply.

Contact your authorized CLARK burden carrier dealer for further information including operator training programs and auxiliary visual and audible warning systems, fire extinguishers, etc., as available for specific user applications and requirements.

Specifications, equipment, technical data, photos and illustrations are based on information at time of printing and are subject to change without notice. Some products may be shown with optional equipment.

# CLARK BURDEN CARRIERS

provide **economical** solutions with **reliable** components.  
Our **attractive** designs are appealing on all levels, with uncompromising performance.



LIGHT PACKAGE STANDARD



TURN SIGNALS STANDARD



REAR DISC BRAKES STANDARD



BLACK STEEL WHEELS STANDARD



AC POWER



TYCO SEALED 500 AMP CONTACTOR



ON BOARD HI-FREQ CHARGER



OPTIONAL WATERING SYSTEM



OPTIONAL SEALED BATTERIES



OPTIONAL SIDE RAILS AVAILABLE



OPTIONAL CANOPY TOP AVAILABLE



OPTIONAL WINDSHIELD AVAILABLE



UL CLASSIFIED\*



ASSEMBLED IN U.S.A.



TECH SUPPORT WHEN NEEDED



QUICK SHIPMENT ON SPARE PARTS

## And Don't Forget... Safety Starts With You!

### Before operating a burden carrier, an operator must:

- Read and understand operator's manual.
- Perform a daily inspection.
- Not operate a faulty burden carrier.
- Not repair a burden carrier unless trained and authorized.

### During operation, a burden carrier operator must:

- Keep entire body inside burden carrier chassis.
- Keep burden carrier away from people and obstructions.
- Allow safe stopping distance and come to a complete stop before leaving burden carrier.



**CLARK BURDEN CARRIERS**  
ALL VEHICLES PROUDLY ASSEMBLED IN THE U.S.A





WHAT IT MEANS TO BE

# BUILT TO LAST<sup>®</sup>

## COST EFFECTIVE

Initial purchase price of your CLARK Burden Carrier is only part of your overall cost. CLARK Material Handling Company ensures that your long-term costs of ownership are kept to a minimum. The benefit to you – CLARK Burden Carriers are designed to provide long-term productivity with a minimum cost.

## KEEPING UPTIME TO A MAXIMUM

You want your burden carriers moving people and materials – not sitting in the shop. CLARK's experience with building and servicing burden carriers is combined with the largest material handling distribution network to ensure just that... your CLARK Burden Carrier keeps working shift after shift.

## DEALER & FACTORY SUPPORT

And that same CLARK dealer network is well equipped to fill all your burden carrier related needs including financing, leasing and rental, factory authorized parts and service, up-to-date training and much more — all while backed by CLARK's extensive technical factory support.



**CLARK Material Handling Company**  
North American Headquarters  
700 Enterprise Drive • Lexington, KY 40510  
866-252-5275 • [www.clarkmhc.com](http://www.clarkmhc.com)

59-600-6002

BURDEN CARRIERS BROCHURE

To Find Your Nearest Authorized CLARK Dealer, Visit Our Website [www.clarkmhc.com/dealers](http://www.clarkmhc.com/dealers)  
© 2013 CLARK Material Handling Company. All rights reserved.

**CLARK BURDEN CARRIERS BROCHURE**  
Printed in USA MP10135M